

# MayTex-Acryl with Texgard impregnation

- material: 100% polyacrylic, spun-dyed, weight 300g/m<sup>2</sup> ±5%
- water column (fabric water tightness) 370 mm, European standard EN 20 811
- colour fastness: grade ≥7 (against bleaching), tested acc. to standard EN ISO 105-B02 (1= min., 8= max.)
- colour fastness to artificial weathering: grade ≥4-5 (against bleaching), tested acc. to standard EN ISO 105-B04 (1= min., 5= max.)
- protection against UV rays: UPF 40-80, tested acc. to UV standard 801 (see page 201 for individual values)

- weather-proof, high and low temperature resistant
- Texgard impregnation gives effective protection against oil, grease, mildew and algae, industrial pollution, exhaust fumes and other negative environmental factors
- tested acc. to OEKO-TEX Standard 100 (63864 OETI, QC 638/2 IFTH)
- imprinted ads: on parasol canopy and valance in durable, brilliant screen-printing quality
- cleaning: easy to clean with CleanoMay 13, even when mounted



SA 314 010 white  
similar to RAL 9003  
bordering 00 white



SA 314 018 white, grey knopped  
similar to RAL 9016  
bordering 00 white



SA 314 580 white,  
yellow/white nap  
similar to RAL 9002  
bordering 18 silver



SA 314 325 ecru  
similar to RAL 1013  
bordering 52 nature



SA 314 851 vanilla  
similar to RAL 1015  
bordering 20 ivory



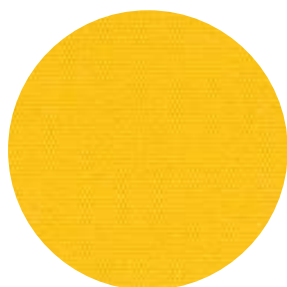
SA 314 583 white/yellow,  
grey knopped  
similar to RAL 1023/1013  
bordering 20 ivory



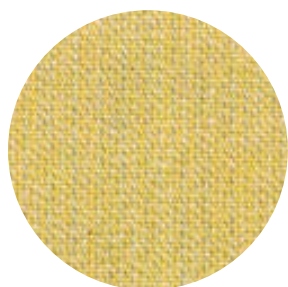
SA 314 033 ivory  
similar to RAL 1013  
bordering 20 ivory



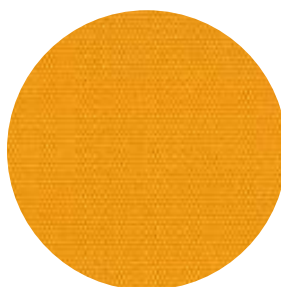
DA 7560 light yellow  
similar to RAL 1023  
bordering 10 pyrite



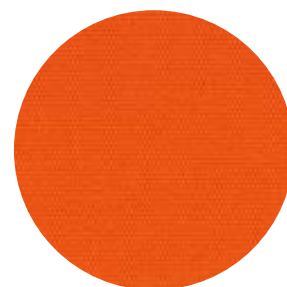
SA 314 003 yellow  
similar to RAL 1023  
bordering 32 yellow



SA 314 045 pyrite  
similar to RAL 1002  
bordering 10 pyrite



SA 314 014 mandarine  
similar to RAL 1033  
bordering 79 mandarin



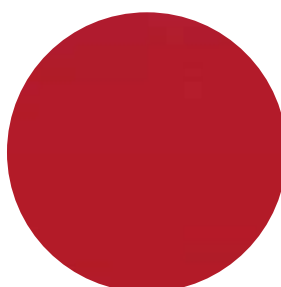
SA 314 002 orange  
similar to RAL 2004  
bordering 81 orange



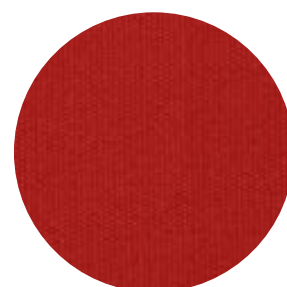
SA 314 397 magenta  
similar to RAL 4010  
bordering 410 magenta



SA 314 007 pure red  
similar to RAL 3028  
bordering 82 red

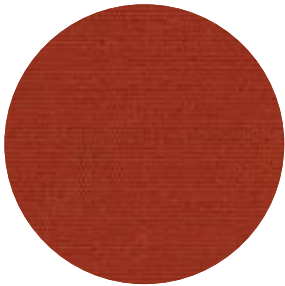


SA 314 001 cherry  
similar to RAL 3020  
bordering 85 cherry

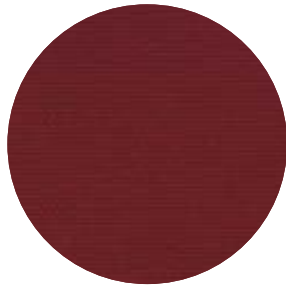


SA 314 347 ruby  
similar to RAL 3003  
bordering 85 cherry

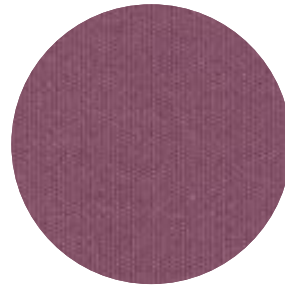
The shades shown here are not in accordance with the original ones.  
 If requested, we will be pleased to send you a collection of original cloth samples.  
 Special colours are available upon request.



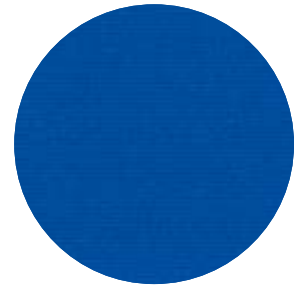
SA 314 022 rust  
 similar to RAL 2001  
 bordering 83 rust



SA 314 763 bordeaux  
 similar to RAL 3004  
 bordering 86 bordeaux



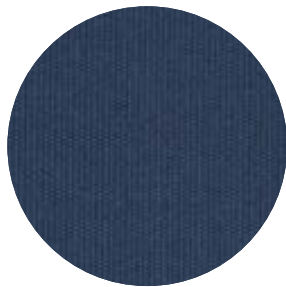
SA 314 143 mallow  
 similar to RAL 4001  
 bordering 91P mallow



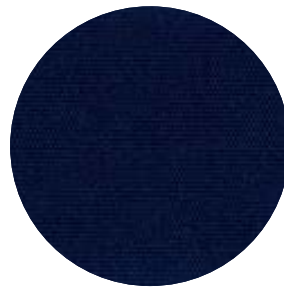
SA 314 011 royal blue  
 similar to RAL 5010  
 bordering 62 royal blue



SA 314 006 sapphire  
 similar to RAL 5002  
 bordering 66 sapphire



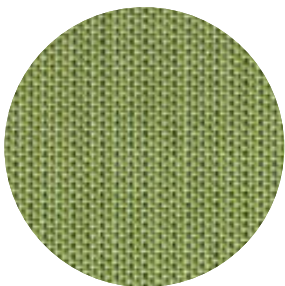
SA 314 546 patina blue  
 similar to RAL 5007  
 bordering 187 blue patina



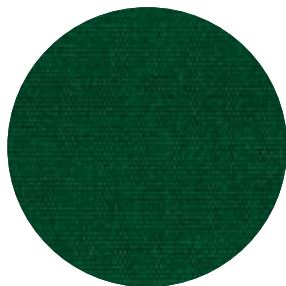
SA 314 414 navy blue  
 similar to RAL 5013  
 bordering 91 navy blue



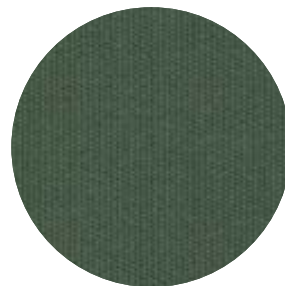
DA 7244 lime green  
 similar to RAL 6018  
 bordering 42 lime green



SA 314 396 green/apple green,  
 structured  
 similar to RAL 6021  
 bordering 42 lime green



SA 314 362 dark green  
 similar to RAL 6005  
 bordering 95 dark green



SA 314 624 patina green  
 similar to RAL 6000  
 bordering 162 green patina



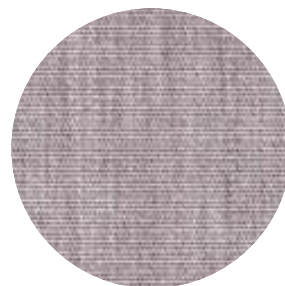
SA 314 038 beige  
 similar to RAL 1019  
 bordering 11 beige



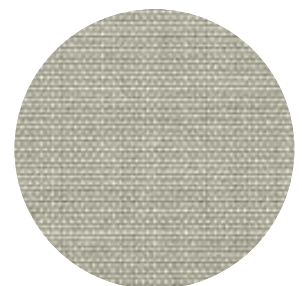
SA 314 471 silver grey,  
 dark brown knopped  
 similar to RAL 1013/7006  
 bordering 18 silver



SA 314 030 light grey  
 similar to RAL 7047  
 bordering 18 silver



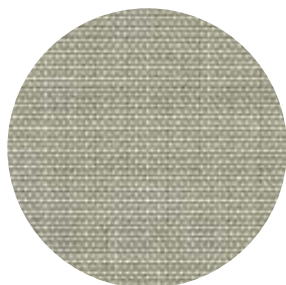
SA 314 028 stone grey, mottled  
 similar to RAL 7042  
 bordering 18 silver



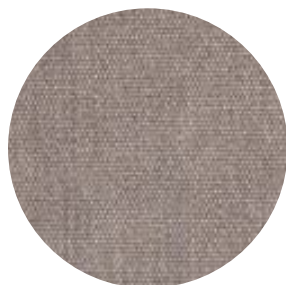
SA 314 044 grey-white  
 similar to RAL 7004  
 bordering 18 silver

## MayTex-Acryl with Texgard impregnation

- material: 100% polyacrylic, spun-dyed, weight 300g/m<sup>2</sup> ±5%
- water column (fabric water tightness) 370 mm, European standard EN 20 811
- colour fastness: grade ≥7 (against bleaching), tested acc. to standard EN ISO 105-B02 (1= min., 8= max.)
- colour fastness to artificial weathering: grade ≥4-5 (against bleaching), tested acc. to standard EN ISO 105-B04 (1= min., 5= max.)
- protection against UV rays: UPF 40-80, tested acc. to UV standard 801 (see page 201 for individual values)
- weather-proof, high and low temperature resistant
- Texgard impregnation gives effective protection against oil, grease, mildew and algae, industrial pollution, exhaust fumes and other negative environmental factors
- tested acc. to OEKO-TEX Standard 100 (63864 OETI, QC 638/2 IFTH)
- imprinted ads: on parasol canopy and valance in durable, brilliant screen-printing quality
- cleaning: easy to clean with CleanoMay 13, even when mounted



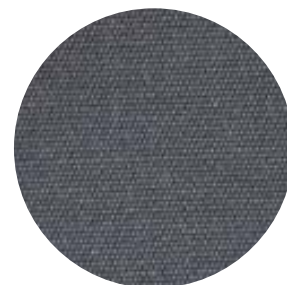
SA 314 364 telegrey/white  
similar to RAL 7046  
bordering 147 opal



DA 8779 olive brown  
similar to RAL 7002  
bordering 9533 olive brown



DA 7559 taupe  
similar to RAL 7006  
bordering 926 taupe



DA 8203 basalt grey  
similar to RAL 7010  
bordering 97 grey basalt



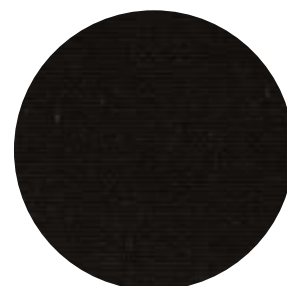
SA 314 398 atlas grey  
similar to RAL 7043  
bordering 97 grey basalt



SA 314 402 black/beige,  
structured  
similar to RAL 6006  
bordering 19 black



SA 314 016 dark brown  
similar to RAL 8017  
bordering 27 dark brown



SA 314 154 black  
similar to RAL 9017  
bordering 19 black

The shades shown here are not in accordance with the original ones.  
If requested, we will be pleased to send you a collection of original cloth samples.  
Special colours are available upon request.

## Borderings

If no colour is specified, a binding tape will be chosen to match the cloth.



00 white



20 ivory



52 nature



11 beige



32 yellow



10 pyrite



79 mandarin



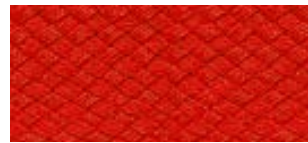
81 orange



148 terracotta



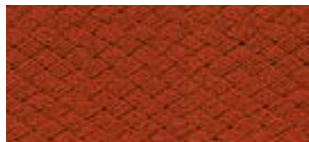
410 magenta



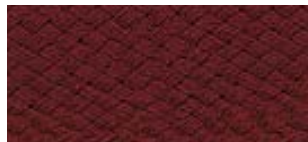
82 red



85 cherry



83 rust



86 bordeaux



91P mallow



62 royal blue



63 blue



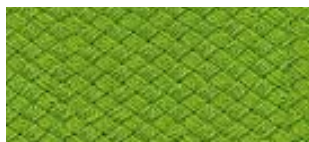
187 blue patina



66 sapphire



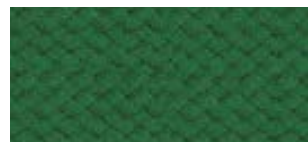
91 navy blue



42 lime green



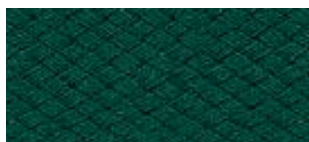
44 grass-green



162 green patina



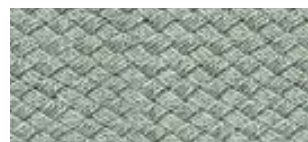
45 olive



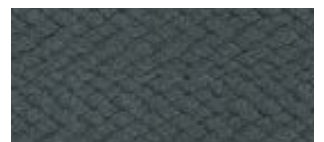
95 dark green



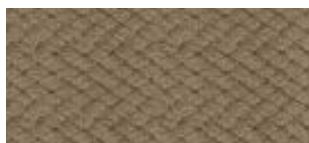
18 silver



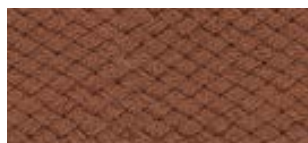
147 opal



97 grey basalt



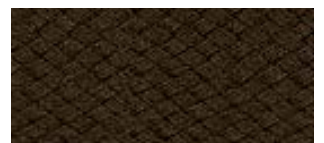
926 taupe



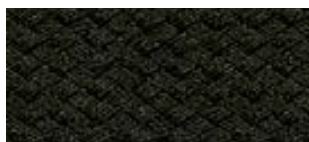
25 light brown



9533 olive brown



27 dark brown



19 black

The textile finishing of a parasol canopy – i.e. the fabrics – is not only the most important and most conspicuous feature of any sun protection system, it also fulfils numerous functions:

### **Colour, light and shade: personal well-being, atmosphere and decoration**

The comprehensive range of upmarket classics and specialities. The fabric keeps out the light. It protects, shades, creates atmosphere and serves as an element of design and decoration. The fabric evokes a sense of harmony and creates a feeling of well-being by filtering and tinting the light and thus lending a room and its environment a very special soothing atmosphere. The impact a fabric has on a person is decisively determined by its colour, pattern and degree of translucence.



### **Harmony and Inner peace**

through well-balanced colours and natural shades of colour.

---



### **Joie de vivre**






through vibrant colours.

---




## Healthy shade provider, protection from harmful UV radiation

The sun is a source of life and its light provides our bodies with essential vitamins, but it can also be very dangerous. Studies by the WHO indicate a threefold increase in skin diseases caused by harmful UV radiation. The UV Protection Factor (Sun Protection Factor) of our fabrics is a unit that indicates to what extent they increase the human skin's

natural protection time to direct sunlight. The length of the natural protection of human skin depends on the skin type. The following textiles in our collection have been tested and certified according to the latest and most stringent standard UV 801.

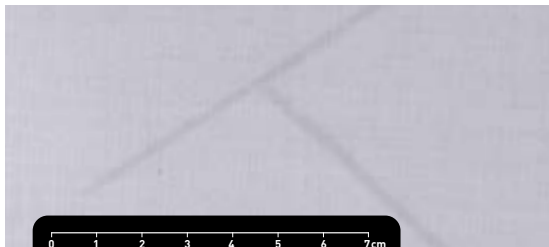
	Sun Protection Factor			Effect on personal well-being	
	 UV STANDARD 801 Test-No. 35120 ÖTI GmbH	 UV STANDARD 801 Test-No. 33282 ÖTI GmbH	 www.uvstandard801.com UV STANDARD 801 19.1.10.0049-80-1 Hohenstein 19.1.10.0049-90-2 Hohenstein Test-No. 35122 ÖTI GmbH Test-No. 74088 ÖTI GmbH	 Joie de vivre	 Inner peace
<b>MayTex-Acryl UNI</b>					
SA 314 001, SA 314 002, SA 314 003, SA 314 007, SA 314 011, SA 314 014, SA 314 143, SA 314 396, SA 314 397, DA 7560			80	•	
SA 314 006, SA 314 016, SA 314 022, SA 314 028, SA 314 038, SA 314 044, SA 314 045, SA 314 154, SA 314 347, SA 314 362, SA 314 364, SA 314 398, SA 314 402, SA 314 414, SA 314 546, SA 314 624, SA 314 763, SA 314 851, DA 7244, DA 7559, DA 8203, DA 8779			80		•
SA 314 030, SA 314 325, SA 314 471, SA 314 583		60			•
SA 314 010, SA 314 018, SA 314 033, SA 314 580	40				•
<b>MayTex-Poly</b>			80		
<b>MayTex-PVC</b>			80		

## How high is your personal protection factor? Type 1-6

Type	Characteristics	Reaction of the unprotected skin to 30 mins. radiation in June	The human skin's natural protection time	Protection time of the skin when shaded by a parasol		
				 UV STANDARD 801 Test-No. 35120 ÖTI GmbH	 UV STANDARD 801 Test-No. 33282 ÖTI GmbH	 UV STANDARD 801 19.1.10.0049-80-1 Hohenstein 19.1.10.0049-90-2 Hohenstein Test-No. 35122 ÖTI GmbH Test-No. 74088 ÖTI GmbH
1	light skin, freckles, fair or red hair, blue or green eyes	always sunburn no tan	5-10 minutes	200-400 minutes	300-600 minutes	400-800 minutes
2	light skin, fair hair, blue or green eyes	always sunburn a slight tan	10-20 minutes	400-800 minutes	600-1200 minutes	800-1600 minutes
3	dark hair, blue eyes	slight sunburn a good tan	20-30 minutes	800-1200 minutes	1200-1800 minutes	1600-2400 minutes
4	dark skin, dark or black hair, brown eyes	no sunburn a good tan	approx. 45 minutes	approx. 1800 minutes	approx. 2700 minutes	approx. 3600 minutes
5	dark skin, black hair, dark eyes	no sunburn	approx. 60 minutes	approx. 2400 minutes	approx. 3600 minutes	approx. 4800 minutes
6	black skin, black hair, black eyes	no sunburn	approx. 90 minutes	approx. 3600 minutes	approx. 5400 minutes	approx. 7200 minutes

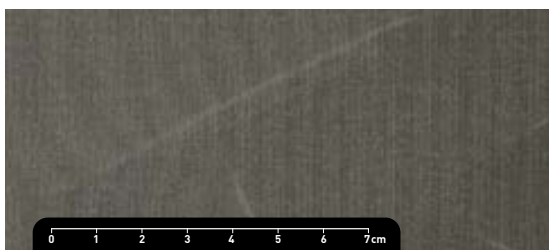
## Product properties of fabrics

Parasol cloths are high-performance products. However, given the requirements that have to be met in the field of environmental protection, there is a limit to the degree of perfection that can be achieved in spite of present-day state-of-the-art production and processing. As a result, customers may occasionally lodge complaints regarding certain features that can appear on the cloth. Such features neither alter the value of the product, nor do they impair its usability in any way. As we feel committed to providing full consumer information and thus hope to avoid irritation or dissatisfaction, we should like to draw your attention to the following features:



### Crease marks

Crease marks may appear during the production process or when folding the parasol fabric. When held against the light, cloths – particularly those of a light colour – may appear to have a dark streak in the crease.

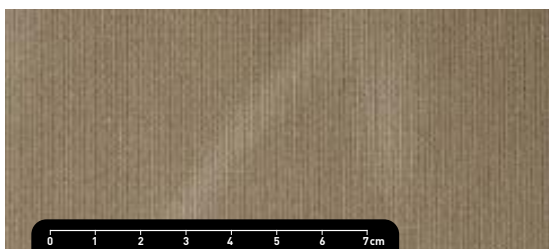


### Chalk effect

Light chalk-like stripes may arise during the processing of materials. Although the greatest of care is taken, they cannot always be totally avoided.

### Water/rain resistance

Acrylic canopy covering are impregnated with a water-repelling finish and can withstand short periods of light rainfall if treated with proper care. During lengthy periods of rainfall or heavy downpours, however, the parasol should remain closed in order to prevent any material damage. If the cloth becomes wet, the canopy covering should be opened again as soon as possible to allow it to dry.



### Abrasion marks

In the course of time abrasion may weaken the canopy fabric and thus impair its quality. This can be avoided by pulling the cloth between the spokes when closing the parasol and then securing it with a yellow strap to prevent flapping.



### Cleaning instructions

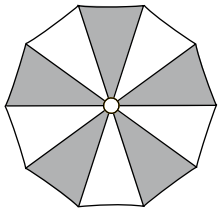
Stains can be cleaned off with a soft brush and CleanoMay 13. Rinse well afterwards with clean water to remove all detergents from the fabric. A high-pressure hose may be used for large-area surfaces (max. 30° C, max. 30 bar, min. distance from canopy covering 30 cm, cleaner: CleanoMay 13, 1 litre concentrate yields 26 litres liquid cleanser).

## Characteristic features of our sewing yarn:

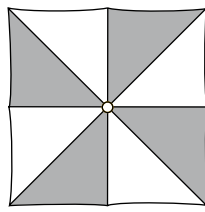
- high tensile strength
- optimum abrasion resistance
- well-balanced elongation property
- high thermal resilience
- good light and weather fastness

## Alternating segment colours

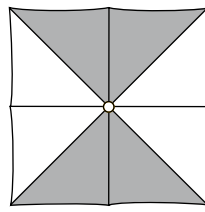
Alternating segment colours are available as illustrated.



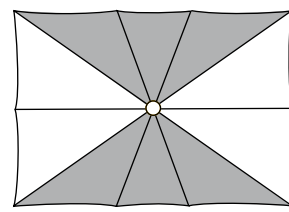
1/8-division



1/8-division



1/4-division



1/4-division

## Bordering

The canopy covering is trimmed with high-quality polyacrylic edge binding. If not specified otherwise, the border will be chosen to match the colour of the canopy fabric. For special optical accents you may also choose the canopy and binding in contrasting colours.



FILIUS ø 3 m, MayTex-Acryl SA 314 014 mandarine,  
Bordering in 18 silver





## Premium parasol equipment for patios and smoking areas.

Parasols provide shelter from the sun and rain – a MAY premium parasol kit does more. Thanks to efficient lighting and infrared heating systems, this upmarket parasol concept for outdoor venues creates a warm and inviting ambience any time of the day and every season of the year. A feel-good environment created by maximum-comfort equipment helps to extend the outdoor season – your customers stay and enjoy. Moreover, you can offer them a comfortable smoking area outside. A place for smokers – a plus for your business!

### Wind shelter for smoking areas

With the help of side sheets, your giant parasol will become all-weatherproof and offer shelter from side winds. The polyester fabric is robust and durable and at the same time offers ample space for commercial branding of your choice. Several options are available: with or without windows, or with a continuous light belt. See page 192 onwards.

### Well-devised safety precautions

The use of electricity outdoors requires particularly careful safety measures. All our equipment materials and components are authorized for outdoor use and are splash-proof. To make sure the radiant heaters cannot be turned on while the parasol is closed, radiant heaters are secured by a three-step safety concept:

1. Main switch at the house
2. Rocker switch at each infrared heater
3. Sensor controlled, automatic cut out switch, art. no. 202051

### Modern efficiency

In terms of the current electricity costs this system is an insider's tip. In order to avoid unnecessary power consumption, each infrared radiant heater can be operated individually at its housing. The optional timer switch provides an additional saving possibility for smoking areas. The smoking person can activate the heater by the push of a button and after 15 minutes it shuts off automatically.

### Ultra-easy handling

Service staff will have no problems in handling our parasols. When installed with premium equipment, MAY parasols can easily be closed without prior removal of heaters or lights.

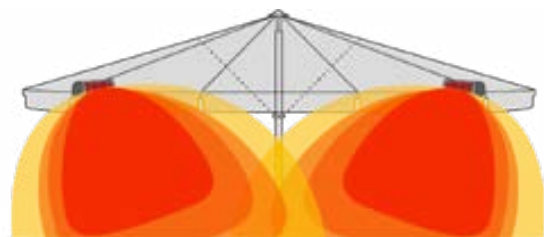
### Optimal heat range

The rays of the infrared heaters are emitted in thermal cones and thus form a protective belt of heat.



### Cabling, long

high-quality outdoor cabling, waterproof plug connections, protection class IP68.



**Example of heaters and lights**  
mounted on Type SCHATELLO  
with anchor tube SZ150  
**KIT S 4 4A**



**Electrical harness for current distributor**

**Cut-out switch**  
against heat overload  
when parasol is closed.  
Installation of **loud-speakers** also possible.

**Slim lights**  
13 W, soft-white light,  
outdoor lighting,  
protection class IP65.

**Swivelling holder**  
for easy handling and  
adjustment.

**Infrared heater**  
1,400 W.

**Power supply**  
within centre pole to avoid  
damage to cabling.

## Customized options and kit components

Compile your very own parasol equipment. As you can see from the list opposite, the kit components cover 9 main aspects.

For a made-to-measure solution just choose the equipment items that best suit your specific requirements.

1. Power supply
2. Current distribution
3. Mounting of heaters
4. Infrared heaters
5. Safety and energy-saving options
6. Slim lights
7. LED lighting
8. App for Bluetooth remote dimmer
9. Loudspeakers



SZ150

### 1. Power supply

#### Anchor tube with placement hinge

SCHATTELLO art. no. SZ150, ALBATROS art. no. AZ120

Underground power supply is the safest and neatest option. The cable inside the parasol centre pole simply needs to be connected to the underground cable on site. The connection itself is within the anchor tube and becomes invisible. The placement hinge makes the installation easy. There is no risk of damaging cables. SZ150 see page 112, AZ120 see page 172.



#### W-MAY 3-pole plug connector art. no. 352422

Connects the power supply within the centre pole (see art. no. 200369 below) with a flexible underground cable. Can be used to install up to 8 slim lights or 20 LED bars. Use only for stationary parasol installation bases (e.g. SZ150).

Delivery includes: plug, socket and socket end cap. For on-site mounting with screw terminals for wires 0.75 – 4.0 mm<sup>2</sup>, rigid and fine-wired.

Clamping area of underground cable: 10 – 14 mm.

IP68, 3-pole, 250 V, 20 A, -20 °C to 100 °C. Colour: black.



#### W-MAY 5-pole plug connector art. no. 200581

Connects the power supply within the centre pole (see art. no. 200369 below) with a flexible underground cable. Can be used to install up to 4 heaters together with 8 slim lights or 4 heaters together with 6 LED bars. Use only for stationary parasol installation bases (e.g. SZ150).

Delivery includes: plug, socket and socket end cap. For on-site mounting with screw terminals for wires 0.75 – 4.0 mm<sup>2</sup>, rigid and fine-wired. Clamping area of underground cable: Ø 13 mm to Ø 18 mm. IP66, 5-pole, 400 V, 20 A, - 20 °C to 100 °C. Colour: black.

SCHATTELLO and ALBATROS:

Due to lack of sufficient space, the 3-pole and 5-pole plug connectors listed above cannot be inserted together in the parasol centre pole.

Should it become necessary to run 2 cables in one pole (e.g. additional cables for loudspeakers), one of the cables must be fixed firmly, for example, with a lustre terminal, H1 plug connector and shrink tubing.



**External appliance plug** art. no. 200582

Special care needs to be taken for parasols on a mobile pedestal base. This appliance plug with Cekon socket and integrated RCD ensures appropriate protection. 5-pole, 400V. However, not suitable for ALBATROS with full frame pedestal or for parasols with tubular motor.

**Internal 2-circuit wiring** art. no. 200587

Usually, parasols with heaters require a 400 V connection. If no high voltage current is available, 2 x 230 V cabling can be installed. In that case a maximum of 4 heaters and 6 LED bars can be fitted.

**Power supply within centre pole** art. no. 200369

Maximum safety is guaranteed by running the cabling through the support pole to the electrical harness. The risk of leakage or external hazards is thus minimized.

**Power supply along one of the spokes** art. no. 202052

Electric current can be run along a parasol spoke, provided there is a nearby socket in the wall of the house at a height of min. 2.3 m. It is always necessary to plug or unplug the parasol before opening or closing it. Make sure that the cable hanging from the parasol does not bother any guests or passers-by. When ordering, please enclose a sketch showing from which spoke the cable is to be run. Delivery includes: 1 m of cable to extend from a spoke end. Plug and socket not included.

## 2. Current distribution

**Electrical harness**

Full wiring in accordance with the circuit system is skilfully enclosed in this inconspicuous electrical harness – no cable tangle. Just another contribution to the overall elegance of the eye-catching parasol.

**Electrical harness SCHATTELLO** art. no. 200565

Adapter art. no. 200567 is necessary for SCHATTELLO sizes 2 x 4 m, 2.5 x 3.5 m, 2.5 x 4 m, 2.5 x 5 m, 3 x 3 m, 3 x 4 m, 3 x 4.5 m, 3 x 5 m, 3 x 6 m, 4 x 6 m, 4 x 4 x 4 m, Ø 6 m 12 spokes.

**Electrical harness ALBATROS** art. no. 200566



**Cabling**

Current is run directly from the electrical harness to the heater via special plug connectors to VDE rubber-sheathed cables. This material is safer and more durable for outdoor use than PVC.

**Cabling, long** art. no. 200579

for swivelling holder art.no. 202040 (SCHATTELLO) and art. no. 200577 (ALBATROS).

**Cabling, short** art. no. 200585

for swift-fold spar art. no. 200578.



202040

### 3. Mounting of heaters

#### Swivelling holder

The heaters are fixed onto the end of a spoke with a swivelling holder. Thanks to this innovative, patented mechanism the heaters can be turned 90° and remain mounted when the parasol is closed. No tiresome mounting and dismounting when opening and closing the parasol.



rest position, turned by 90°



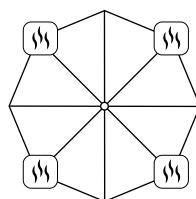
closing parasol

#### Swivelling holder SCHATTELLO art. no. 202040

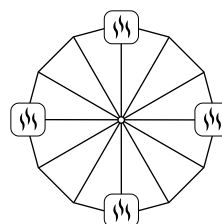
Not suitable for 6 x 6 x 6 m with valance, Ø 3 m, Ø 4 m, Ø 5 m, 2 x 2 m, 2.5 x 2.5 m, 3.5 x 3.5 m, 2 x 3 m, 2 x 4 m, 2.5 x 3 m, 2.5 x 3.5 m and 4 x 4 x 4 m. Alternative: opt for swift-fold spar, art. no. 200578.

#### SCHATTELLO

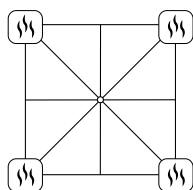
#### Possible positions: Heater with swivelling holder



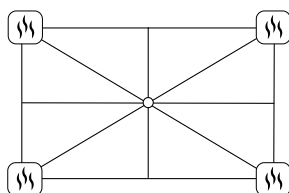
8 segments, round



12 segments, round



8 segments, square



8 segments, rectangular



**Swivelling holder ALBATROS** art. no. 200577

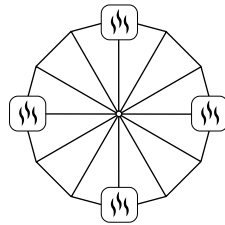
Not suitable for Ø 4 m, Ø 4.5 m, Ø 5 m, Ø 5.5 m, Ø 6 m, Ø 7 m, 3.5 x 3.5 m, 3 x 4 m, 3 x 6 m, 3.5 x 7 m with valance, 4 x 8 m with valance and 5 x 5.85 m with valance.

Alternative: opt for swift-fold spar, art. no. 200578.

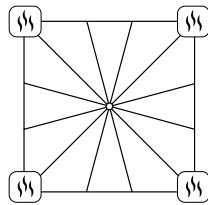
**ALBATROS**

**Possible positions: Heater with swivelling holder**

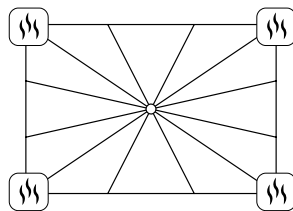
4 heaters



12 segments, round

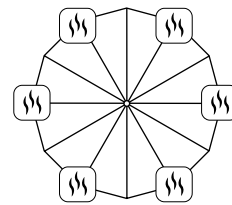


12 segments, square

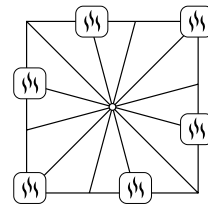


12 segments, rectangular

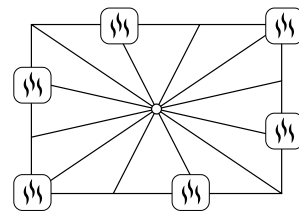
6 heaters



12-Teiler segments, round



12 segments, square



12 segments, rectangular

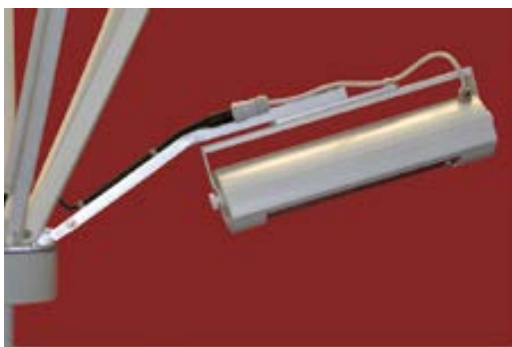


200578

### 3. Mounting of heaters

#### Swivelling holder

The heaters are fixed onto the end of a spoke with a swivelling holder. Thanks to this innovative, patented mechanism the heaters can be turned 90° and remain mounted when the parasol is closed. No tiresome mounting and dismounting when opening and closing the parasol.



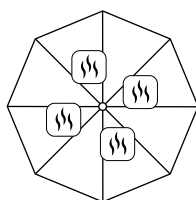
rest position, turned by 90°



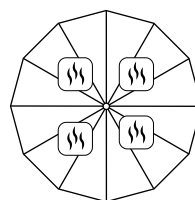
closing parasol

#### SCHATTELLO

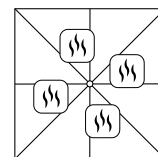
Possible positions: Heater with swift-fold spar



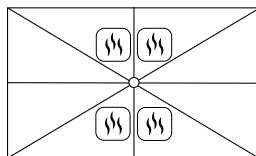
8 segments, round



12 segments, round



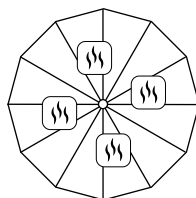
8 segments, square



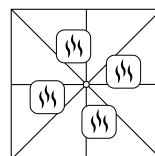
8 segments, rectangular

#### ALBATROS

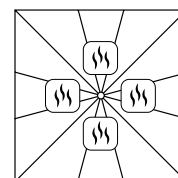
Possible positions: Heater with swift-fold spar



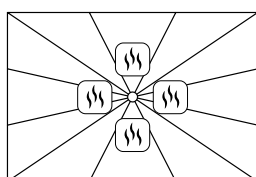
12 segments, round



8 segments, square



12 segments, square



12 segments, rectangular

## 4. Infrared heaters

### Infrared radiant heater 1,400 W art. no. 200430

Conventional heating systems warm up the air. The heat slowly evolves and is gradually transmitted to customers outside - at considerable expense. In bad weather conditions the warmth is blown away again before even reaching the customers. MAY infrared heaters warm only the surface at which they are directed, providing uniform, instant-on heat.

No energy- wasting warming-up process, so that customers very soon feel comfortably warm. Cosy warmth at the push of a button – in spite of any chilly breezes. All heaters have case-mounted switches.

Available in following colours: pure white RAL 9010, and white RAL 9006, fine structure / matt. With W-MAY plug; 230 V, 50 Hz, splash-proof IP24 (ENEC).



200430, IP24

## 5. Safety and energy-saving options

### Automatic auxiliary cut out switch art. no. 202051

This automatic safety switch ensures that the heater cannot be accidentally switched on while the parasol is closed. Thus heat will not be able to accumulate under the canopy covering, then causing damage or even setting the whole parasol on fire.

### Timer switch

Do you wish to keep the costs down at the smoking area? Your guests are able to activate the heater for about 15 minutes at the push of a button. A small button - an enormous (saving) effect.

art. no. 202050

### Timer switch, by button at the electrical harness.

In case of a distributor flange position (with electrical harness) of more than 2 m height we recommend the timer switch, art. no. 353017.



202050



353017

art. no. 353017

### Timer switch, by rocker switch at the support pole

In case of a distributor flange position (with electrical harness) of more than 2 m height we recommend the timer switch by rocker switch at the support pole. It is mounted at the support pole at a height of approximately 85 cm for a better access.

## 6. Slim lights

The luminous body of the slim lights is completely embedded in the enclosure and is thus well-protected for outdoor use. 4, 6 or 8 slim lights, each running at 13 W, can be fitted to the parasol. The soft-coloured lights are screwed directly onto the main spokes.

### Slim light warm white art. no. 202090

2'700° K; 13 Watt; IP65; The T5 light tube is exchangeable.



202090



## 7. LED lighting

Energy-efficient LED light bars (12 Volt) subtly fitted on the underside of the spokes. The 60 high-performance LEDs per bar are extremely durable, dimmable, waterproof, shock-resistant and powered by an upstream power supply unit. The number of LED bars to be mounted and the colour of the light can be determined by you.

### **PSU for 6 LED bars** art. no. 351920

For the use of max. 6 LED bars on the parasol (each 12 V DC / 0.5 A). IP67; 90-260 V AC 50 / 60 Hz input; 12 V DC / 3.3 A output; temperature -40° to +70° C; air-cooled. If a tubular motor is to be used, the 6-connection power supply unit must be installed on the outside wall or inside the house. In that case an additional 12 V supply cable is needed for the parasol.

SCHATTELLO: Mounted on the telescopic pole at the factory.

ALBATROS: Installed in the electrical harness.

The combination "heaters + LED lighting + loudspeakers" is only possible with a 400 Volt supply cable. Moreover, in this case, a maximum of 6 LED bars can be installed. This is due to the limited space for cables in the parasol centre pole.

### **PSU for 20 LED bars** art. no. 350271

To be used with a maximum of 20 LED bars warm white (each 12 V DC / 0.5 A) or 27 LED bars RGB-ww (each 12 V DC / 0.4 A) at the parasol. IP65; 90-270 V AC 50 / 60 Hz input; 12 V DC / 11 A output; intern dimmable: 5.5-11 A; temp. -30° up to + 70° C; air-cooled.

SCHATTELLO and ALBATROS:

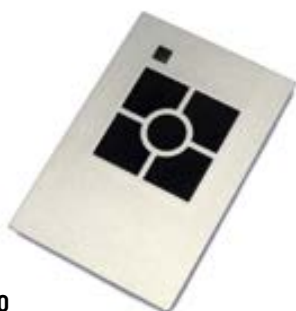
The power supply unit for 20 LED bars must be installed on the outside wall or inside the house. In that case an additional 12 V supply cable is needed for the parasol.

### **Bluetooth remote dimmer v16-9** art. no. 352888

4 channels, 36 Watt / 12 Volt, for 12 LED-bars RGB-ww (colours and warm white) or 8 LED-bars warm white. Operated by Bluetooth and free app for iOS ( $\geq 5$ ) or Android ( $\geq 4.3$  with API-Level  $\geq 18$ ). Please go to [www.may.ag/comp.pdf](http://www.may.ag/comp.pdf) to check the compatibility. The app lets you control several dimmers separately and save one colour permanently. Simply scan the QR code (see page 188) to download the app.

### **Bluetooth remote control sender** art. no. 352890

To control 2 Bluetooth remote dimmer with LED-bars RGB-ww (colours and warm white) or 4 Bluetooth remote dimmer with LED-bars warm white. (art. no. 352888).



352890



352187

### **LED bar, warm white** art. no. 352187

3'000-3'500° K; 60 LEDs; 12 V DC / 0.5 A; LEDs power-controlled, fitted onto spoke; without spot optics, with diffuser.

**LED-bar RGB-ww (colours and warm white)** art. no. 353925

LED-bar RGB-ww (red, green, blue, warm white 3'000-3'500° K); with 30 LEDs, 12V DC / 0.4 A, colour selection and dimming function by Bluetooth remote dimmer (art. no. 352888); classic LED spot optics with diffuser.

**Great light and impressive atmosphere**

An LED bar with integrated light foil generates a diffuse, all-over illumination and therefore creates a nice and pleasant atmosphere.

**Simple operation**

The colour cycle and the rate of colour change can be controlled by the Bluetooth remote control sender (art. no. 352890) or by the free app (see page 188).

**Light spectrum**

The RGB-ww LEDs can create various colour combinations (see examples below).



## 8. App for Bluetooth remote dimmer

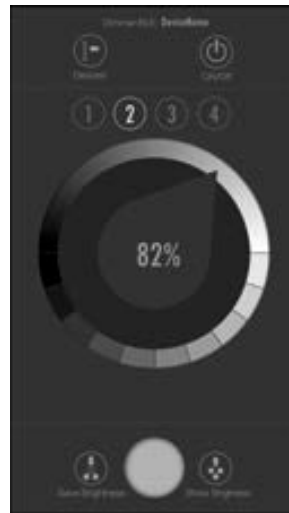


The free app for Bluetooth remote dimmer is available for download at <https://www.may.ag/apps> or can simply be downloaded by QR code (shown on the left). The app is available for Android and iOS (Apple).

### Simple operation

Easily mix various luminous colours and save individual light courses and brightness values by the app for Bluetooth remote dimmer. Additionally, the app provides a “switch-off comfort” that turns off the light after one minute automatically.

Use the app for Bluetooth remote dimmer to control and operate by smart phone. Use the shown QR code to download the free app.



LED bar warm white dimming controller



LED bar RGB-ww (colours and warm white) controller for colour cycle in %, brightness and dimmability

## 9. Loudspeakers

art. no. 202080

Offer pleasant background music to your guests. There are two outdoor loudspeakers neatly incorporated in the electrical harness and therefore weather protected and theft-proof.



The internal cable guide (through centre pole and anchor tube) protects the audio cable from weather effects and damaging. The parasol can be closed without demounting the loudspeakers. Each speaker provides 8 Watt peak performance and 8 Ohm impedance.

If more than one parasol is used, the speaker control must be adjusted individually or an ELA system is required (100 V technique). In case an ELA system is used, each parasol needs a 100 V transformer art. no. 353664.

### **100 V transformer** art. no. 353664

Required for the use of an ELA system. The parasols are supplied with a mono signal, therefore one 100V transformer is needed for each parasol, additionally to the two loudspeakers.





**\* NEW!**

## 10. USB charging station for new parasols orders

Are you thinking about how you may acquire more guests, how you may encourage them to come more often and on a regular basis?

An USB charging station at your MAY giant parasol, visible even from a distance, may offer an effective incentive. Up to 4 smartphones or tablets may be charged safely at the same time.

If your guests are feeling comfortable, the revenue per guest increases, your guests will be happy to visit your place again and will recommend the special service of your location.

Scope of delivery:

2 sockets for 2 smartphones each (4 x 1.5A; 5V DC), in a weather-proof housing, 4 theft-proof charging cables with 3 plug options for the most common smartphones (Micro-USB, USB Type C and Apple Lightning) as well as a black swan neck bracket.

The power supply cable (230V AC, 50Hz) for the USB charging station can be guided

- 1) along a spoke or
- 2) through the centre pole and installation base with a trough-bore for electrics.

The USB charging station can be combined with LEDs or heaters, however, a combination with motor drive, speakers or time switch is not possible.



3 plug charging cable

**USB charging station for SCHATTELLO** art. no. 355714

**USB charging station for ALBATROS** art. no. 356274



## Guide to IP protection classes

### Safety instructions:

Dimensioning and installation of electrical leads must be carried out by a certified electrician only. Always protect your parasol with RCD and automatic cut-out.

### Protection level of electrical components:

The quality of an electrified parasol largely depends on its level of protection. Think, for example, of squirting champagne or any similar unpredictable festivity occurrence and you will agree that "prevention is better than cure". The norm EN 60529 defines different classes or degrees of protection, so-called IP classes. (IP = International Protection).



IP-degree of protection: Example IP65:

2. Second digit  
1. First digit

#### 1. First digit:

IP-degree:	Protection against contact	Protection against foreign objects
0	no protection	no protection
1	large-area parts of the body (e.g. back of the hand)	large foreign objects ( $\varnothing$ 50 mm)
2	finger	medium-sized foreign objects ( $\varnothing$ > 12 mm)
3	tools and wires ( $\varnothing$ > 2.5 mm)	small foreign objects ( $\varnothing$ > 2.5 mm)
4	tools and wires ( $\varnothing$ > 1 mm)	grain-shaped foreign objects ( $\varnothing$ > 1 mm)
5	complete protection against contact	dust deposits
6	complete protection against contact	compl. protection against penetration of dust

#### 2. Second digit:

IP-degree:	Water
0	no protection
1	protection against vertically falling drops of water
2	protection against drops of water coming from an angle of up to 15°
3	protection against spraying water hitting the vertical surface from an angle of up to 60°
4	protection against water splashing from all directions
5	protection against jets of water
6	protection against strong jets of water
7	protection against temporary submersion in water
8	protection against long periods of submersion in water

## Customized side sheet solutions

Side sheets provide all-weather protection and ward off side-winds. The May-Tex Poly material is durable and can be imprinted with any graphic design of your choice. Several variations are available, e.g. without windows, with windows or with a continuous light belt.

- All side sheets are of MayTex-Poly material.
- We recommend opting for parasols with valances if side sheets are to be used. Thus draughts through the space between the canopy and the side sheets can be avoided.
- Side sheets are fastened to the end of the spokes with specific holders. It will therefore be necessary to order holders number FA141, SA141 or AA141, depending on your parasol type.

	FILIUS	SCHATTELLO	ALBATROS
A300	•	•	•
A303	•	•	•
A306	•	•	•
A309	•	•	•
A312	•	•	
A315	•	•	
Roll-up door	•	•	•



Side sheet holder



Variable bottom end of side sheet

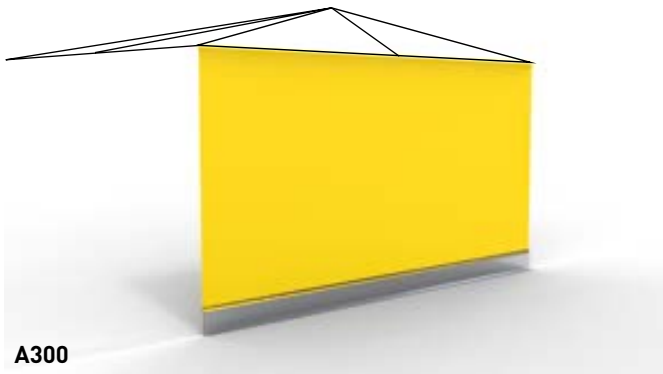


Aluminium rod in textile pocket



Installation of side sheet variations A300 and A303

The side sheets shown below extend across one side of the parasol and are fastened to the spokes.



**A300**

Side sheet without windows



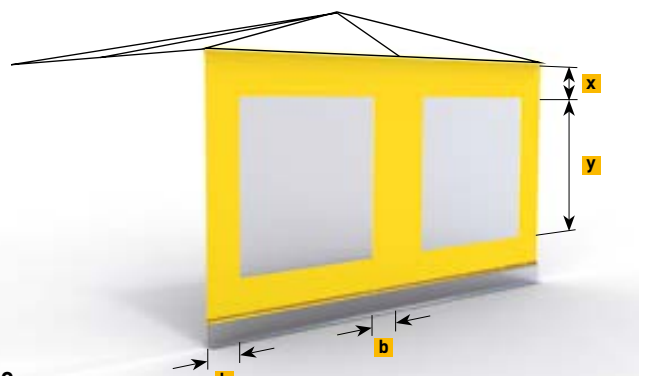
**A303**

Side sheet with continuous light belt



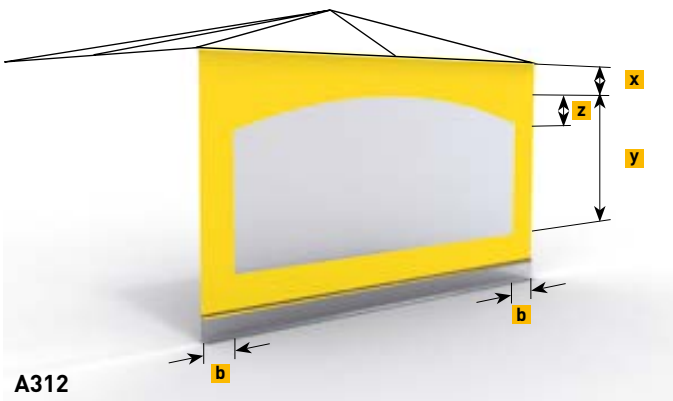
**A306**

Side sheet with one window across one roof side



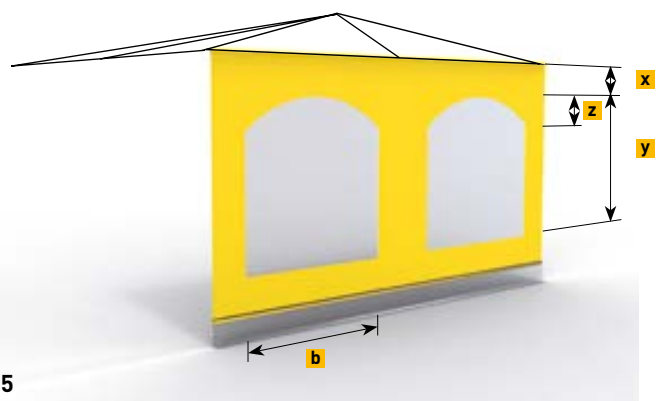
**A309**

Side sheet with one window per roof segment



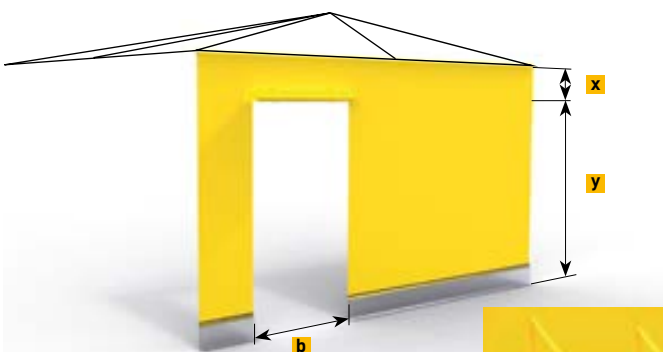
**A312**

Side sheet with one arched window across one roof side



**A315**

Side sheet with one arched window per roof segment



**Roll-up door**

Side sheet with roll-up door. Only possible in combination with variations A300 or A303.



	x in cm	y in cm	z in cm	b in cm
<b>A303</b>	35	135		
<b>A306</b>	35	135		30
<b>A309</b>	35	135		30
<b>A312</b>	35	135	25	30
<b>A315</b>	35	135	25	120
<b>Roll-up door</b>	35	200		100





### **The concept**

Upgrade your giant parasol to gain maximum stability. The parasol roof stabiliser supports the spokes at the outer edge, right where the highest forces are acting on. The drag and compressive forces of the wind are absorbed and so the giant parasol gains enormous stability.

---

### **Field of application**

The parasol roof stabiliser is your solution if your parasol should remain open even during stronger winds. This is especially interesting for exposed areas such as open terraces, coastal areas or top floors of office or industrial buildings.

---

### **Sustainability**

A giant parasol that is equipped with parasol roof stabilisers can withstand stronger winds. Therefore, this reduces the movements of the spokes and so increases the durability. These are your benefits:

1. Extended durability conserves resources and protects the environment. Decide for a higher investment that pays off long-term.
  2. Worldwide the climate warming causes extreme weather events. The more stable an installation is built the better it can withstand these challenging environmental conditions.
- 

### **More revenue**

The parasol roof stabilisers reinforce a giant parasol so it can be used almost throughout the year. High stability provides optimal all-weather protection and so helps to increase revenue in the gastronomy sector. A benefit in all respects.

## General Information

### Wind-resistant side sheets

Even with smaller parasol models side sheets sometimes have to withstand high wind pressures. The weight of the side sheets also puts force on a giant parasol. Parasol roof stabilisers are able to absorb these forces. Additionally, side sheets can firmly be tied down to the floor without putting additional force onto the parasol. Therefore, parasol roof stabilisers enable you to protect even larger areas for your customers.

---

### Stabilisation levels

Four parasol roof stabilisers attached to the diagonal spokes, reinforce the basic stability of a giant parasol at a reasonable price. The optimum is reached if all spokes are supported by parasol roof stabilisers. Due to the modular design you can easily upgrade from four spokes to all spokes.

---

### Keep calm and brave the wind

Up to 200 kg of drag and compressive forces of the wind can be absorbed in axial direction.



### Upper fixation

clamping with flexible ball knob



see page 207

### Parasol roof stabiliser

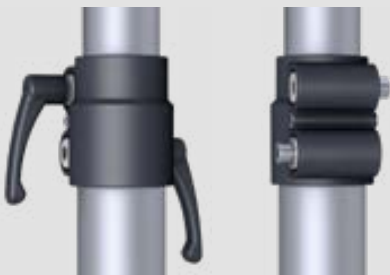
thread bar with cross bolt and ball socket



see page 207

double clamping

- 1. quick lock
- 2. fixed installation



see page 208

### Bottom fixation

DMZ installation option



see page 209



## Upper fixation

Aluminium profile in EV1 silver-grey, white ball socket.

suitable for SCHATTELLO

article no. **354100**

suitable for ALBATROS

article no. **354102**



## Initial installation

The "upper fixation" is firmly glued to the aluminium spoke during initial installation. Therefore, it remains attached also for opening and closing of the giant parasol.



## Automatic adjustment

The ball housing of the ball socket adjusts itself to each spoke automatically during installation (on main axis) – independent from its angle of slope. There is no complicated setting or adjustment. Therefore, the parasol roof stabilisers can be flexibly used for any spoke during installation.



## Parasol roof stabiliser

Standard length, telescoping system, aluminium EV1 silver-grey, base mast outer-Ø 55 x 3 mm, telescopic tube outer-Ø 48 x 4 mm, total length retracted 165 cm, total length extended 285 cm.

suitable for SCHATTELLO and ALBATROS

article no. **354104**





### **Uneven terrace floor**

Does the parasol stand on a lightly sloping terrace? Do you want to install the base evenly to avoid tripping hazards during disassembly? This is absolutely no problem. The telescoping mechanism levels out different heights. Due to the infinite clamping, the parasol roof stabilisers even are interconvertible. There is no need of marking as they can be used flexibly for any spoke.

---

### **Easy installation and suitability for gastronomy**

The parasol roof stabiliser is designed for a quick and easy assembly and disassembly. There are no special tools required.

There are two fixation options for the clamps. The components for both options are supplied with each standard delivery.

1. Quick lock: For daily opening and closing, the parasol roof stabiliser can easily be removed by handle.
  2. Fixed installation: The clamps can be fixed with hexagon screws if the parasol remains open for a longer period of time or if opening by unauthorised persons should be avoided.
- 

### **Connecting elements**

All connecting elements of the parasol roof stabiliser are designed to have zero clearance. This avoids mechanical clacking in case of wind and so your guests are not bothered by disturbing background noises.

---

### **Strong and stable**

The heavy-duty thick material ensures reliable use in rough environments. The high weight of 4.7 kg complements the appearance of a maximally stable solution. All components are designed for heavy loading. Up to 200 kg of drag and compressive forces of the wind can be absorbed. This has been tested at the MAY factory.

---

### **The Material**

The telescopic bars are made from aluminium. The surfaces are EV1 anodized and extremely shock and impact resistant.

---

### **Centre pole extension / centre pole shortening**

The telescoping mechanism allows a "headroom without valance" (measure D, see MAY catalogue commercial parasols) of minimum 165 cm and maximum 285 cm. Therefore, the standard measure as well as extensions up to 40 cm are easily realized. Only in case of extreme centre pole extensions, "upper tubes with extensions" are required.

---

## Bottom fixation

### Initial installation

„Bottom fixation“ stands for the anchoring with the ground. Basically all FILIUS installation options can be used, therefore all options whose article numbers start with „DMZ“.

---



DMZ261

### The bottom tube below ground

The DMZ118 bottom tube is a permanent Installation and remains in the ground, no matter if the parasol roof stabiliser is mounted or demounted.

---



DMZ118

### The upper tube

This component can be used temporarily as well as permanently. The upper tube can be removed when demounting the parasol roof stabiliser. The supplied winter cover makes the bottom part trip-proof. Therefore, there is no risk of accidents or injuries.

The upper tube can also remain mounted even if the parasol roof stabiliser is demounted. This saves assembly time. However, the risk of injuries is at owner's risk.

---



DMZ118



DMZ118



SCHATTELLO 4.0 x 4.0 m  
MayTex-Acryl SA 314 347 ruby

The screw-in ground anchor has proven ideal for state-of-the-art foundations. No digging, no concreting necessary. Below: a chart showing that ground-screw installation is more time and cost efficient than concreting



Concreting	Ground screw installation
Installation workers have to make two journeys because of waiting time for concrete to cure.	Just one person comes to take a soil sample. The next time, the screw-in ground anchor is installed. No installation waiting-time.
concrete, gravel and water needed.	only the ground screw needed.
soil excavation necessary.	installed with a special groundscrew driver.
costs of excavation and disposal of spoil.	soil is only shaken up and shifted somewhat.
cannot be relocated.	relocation possible.
surrounding area spoiled by excavation work.	surrounding area remains unspoiled.
weather-dependent.	installation possible even in frosty ground.

## Screw-in ground anchor

Basically, the installation system consists of two components: the screw-in ground anchor and the parasol upper anchor tube.



upper part



screw-in ground anchor

### Function

The ground screw is driven vertically down into the ground until the flange plate is absolutely level with the ground. Due to the conical shape of the shaft, the soil is compressed, providing maximum stability and security. With the help of a Krinner driver, screw-in anchors can be installed into ground up to soil class 4. Special installation machinery may be necessary for higher soil classes.

### Upper anchor tube

The upper anchor tube is fastened to the flange plate of the ground screw with three screws. By means of three adjusting screws the parasol pole is aligned into an upright position.

### Environmentally-friendly

The entire surroundings remain unspoiled and in original condition, so there is no surface area coverage.

### Statics test

To eliminate any risks, parasols installed with screw-in ground anchors and upper anchor tubes have been static-tested for use in soil classes 3–7 and windforce 4.

### Preparatory measures

Before placing your order, please make sure that there are no gas, water, power or other supply lines in the vicinity of the designated spot for the ground screw that could be damaged during installation. Customers are required in advance to declare their own responsibility and liability concerning this matter in writing.

### Installation machinery

For information and services concerning installation machinery for screw-in ground anchors please contact one of the “Krinner Groundscrew” trade partners at: [www.krinner.com](http://www.krinner.com)

You will require the following Krinner attachment: Z1 Attachment F 1234567.

A company employee will first pay an on-site visit to take a soil sample. This will determine whether your screw-in ground anchor can be installed with a groundscrew driver or if special installation machinery is needed. Installation costs will depend on the services required.



## Ground screw installation in 5 steps



### 1. Soil removal and pre-drilling

Remove any paving and gravel to a depth of approx. 15 cm. Using a 40 mm drill, pre-drill vertically into the designated installation spot.



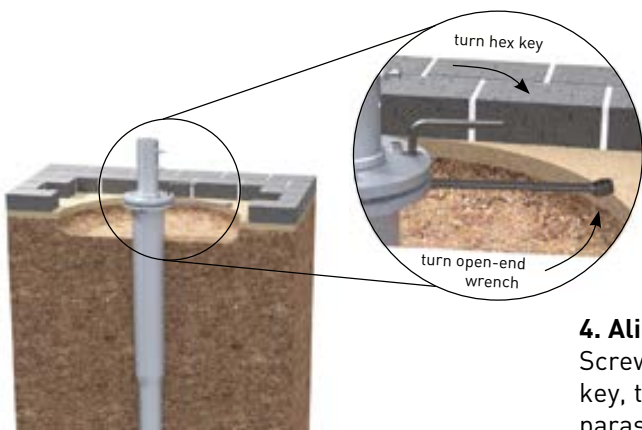
### 2. Preparation

In preparation for the 2.1 m screw-in ground anchor, a smaller, approx. 1.2 m screw must be driven into the ground and then removed again.



### 3. Installation

Drive the 2.1 m ground screw into the pre-drilled hole until it is flush with the ground. If several parasols are to be installed, use a levelling instrument to make sure that all ground screws are flush.



### 4. Aligning

Screw on the upper anchor tube with an open-end wrench and hex key, then align vertically with adjusting screws so that the mounted parasol is upright.



### 5. Final step

Fill up with gravel and lay paving stones right close to the flange plate so that the ground screw itself becomes invisible.

# SCREW-IN

GROUND ANCHOR



FILIUS FS 3.0 x 3.0 m, MayTex-Acryl 314 010 white,  
National Garden Show in Koblenz



3-D visualisation



SCHATTELLO 4.0 x 4.0 m  
cloth: MayTex-Poly  
fabric and colour: M 9875 creme  
without valance

## Add on benefits to your parasol

Decide for a successful local marketing. With printings on the valances you reach the eye level of your customers. Large, eye-catching motives can be placed onto the canopy. You decide if they are legible from above or from below.

A printed protection sleeve provides a perfect advertising space that achieves a powerful marketing even in the off-season when the parasol is closed. We will be happy to assist you – from the first sketch to the expressive final product.



## MAY Printing Guidelines



For more information see the brochure „Printing guidelines“. Please download this under: [www.may.ag/orderform\\_F.pdf](http://www.may.ag/orderform_F.pdf) or scan the QR code.

Art. no. 355799





